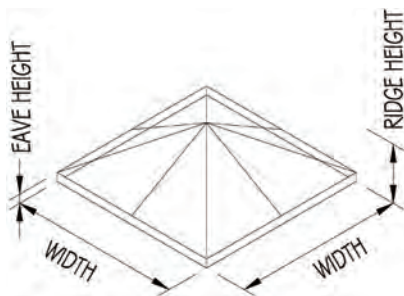
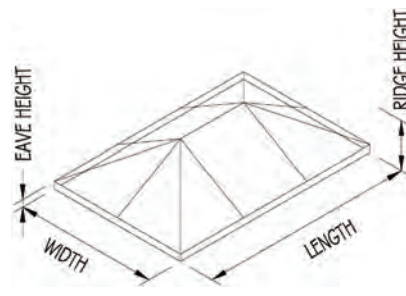




SI5800 thermally enhanced 30° “fixed pitch” aluminum welded curb skylight system is designed for use in commercial and residential applications. The welded curb design provides a weather-tight, self-flashing curb for simplified installation onto a structural curb provided “by others”.



Pyramid



Hip End

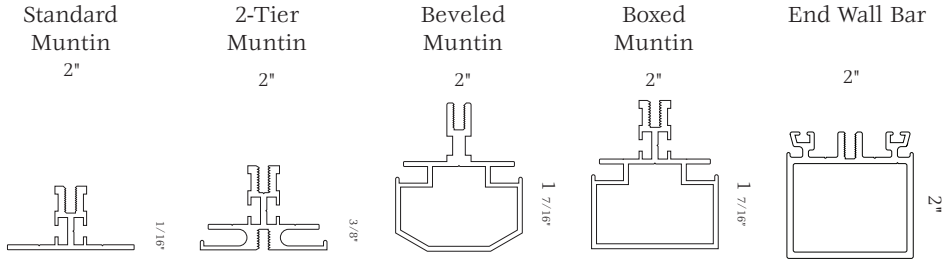
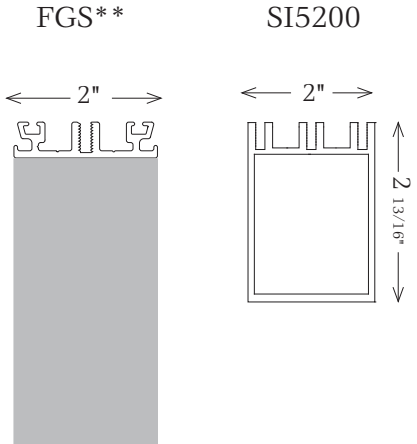
Features:

- Thermally-enhanced aluminum welded curb
- Self-flashing curb
- Curb fasteners on the vertical face, for added water protection
- 30 Degree fixed pitch
- Pre-assembled and pre-glazed up to
 - 8' x 8' Pyramid
 - 8' x 12' Hip Ends
- 2-or 3-tiered drainage system with concealed interior condensation gutters.
- Glazing infills from 3/16" to 1 1/2"; thicker glass options depending upon engineering
- Standard finishes: AAMA 2603
 - Duracron: Hartford Green, Bronze, Black, Natural Clay, White, Sandstone
- Designed and manufactured in the U.S.A.

Options:

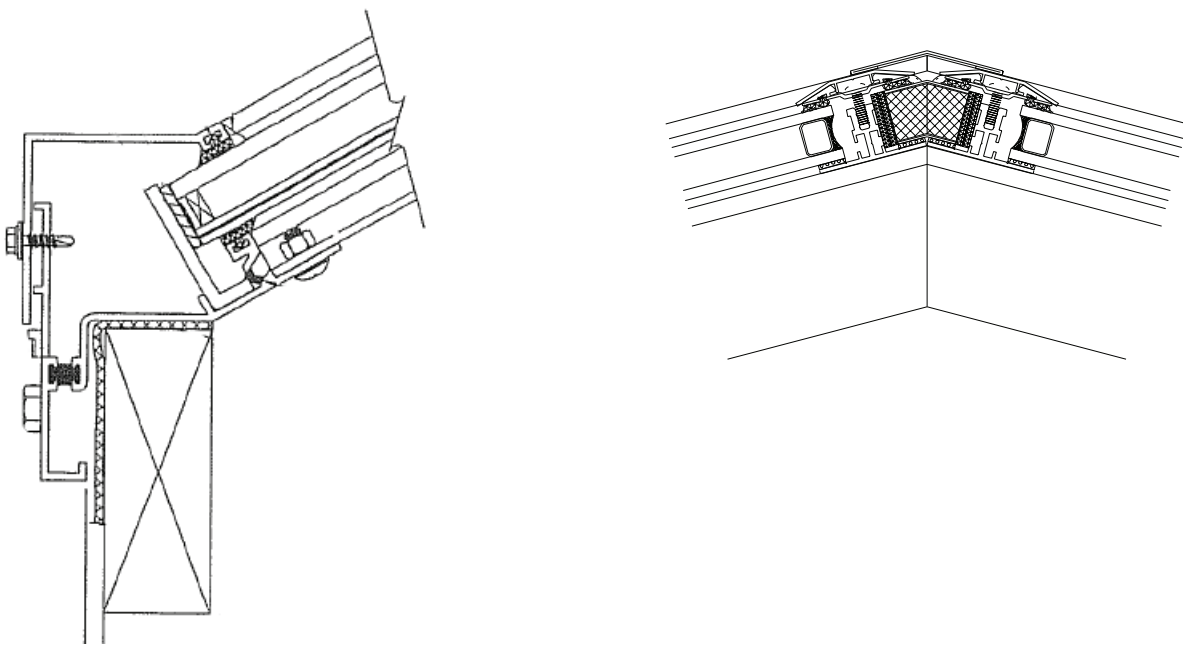
- Aluminum or wood rafters and purlins
- Custom finishes
 - Class I anodized: Dark Bronze, Clear
 - Powder coat finish: AAMA 2604-2605
 - Fluoropolymer (50% or 70%): AAMA 2604-2605
 - Veneer and cladding options
- Operable and retractable venting options
- Designed to accommodate almost any monolithic, insulated, laminated, decorative, polycarbonate, or solid panel infill
- High efficiency Nanogel infill available
- Delivery options: modular; pre-assembled, pre-glazed; pre-assembled, not pre-glazed; knocked down





Curb

Ridge



**2 1/2" and 3" FGS are possible
 Please be sure to visit our website for additional product information.
www.solarinnovations.com

